

# COLLECTORS Case studies

What does performance mean?

Thessaloniki, 11/12/2019

Kévin Le Blévenec,  
VITO



# Context

## Phase 1. Inventory

Map and harmonize existing information on waste collection systems throughout Europe for packaging and paper waste, WEEE, and CDW. Disclose it on a web-based platform to help decision-makers find systems that are in line with their needs.

▶ **Inventory of waste collection practices**

## Phase 2. Assessment

Assess the overall performance of waste collection systems in different geographical areas based on comparable data, using life-cycle assessments and cost-benefit analyses.

▶ **Twelve case studies**

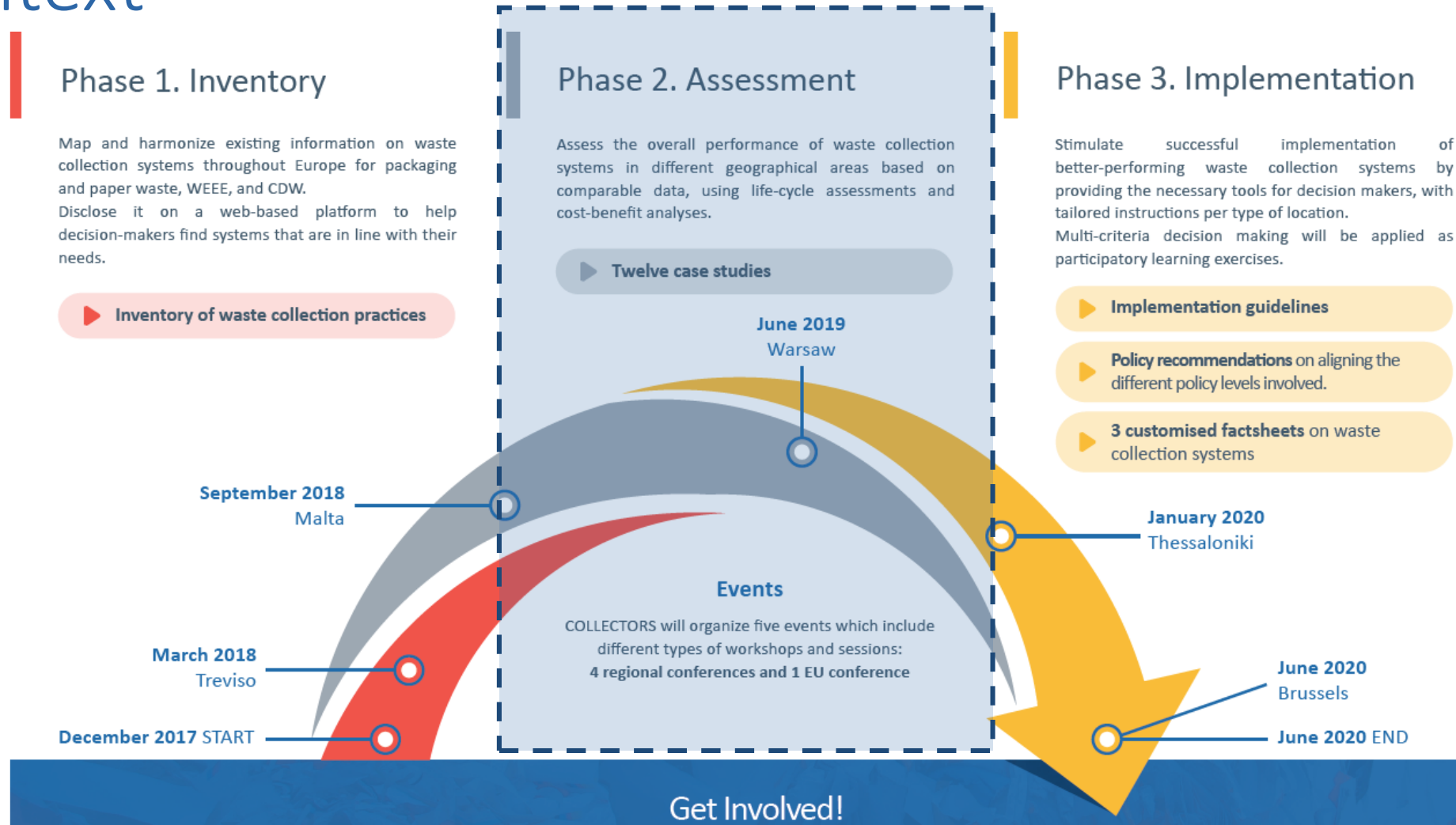
## Phase 3. Implementation

Stimulate successful implementation of better-performing waste collection systems by providing the necessary tools for decision makers, with tailored instructions per type of location. Multi-criteria decision making will be applied as participatory learning exercises.

▶ **Implementation guidelines**

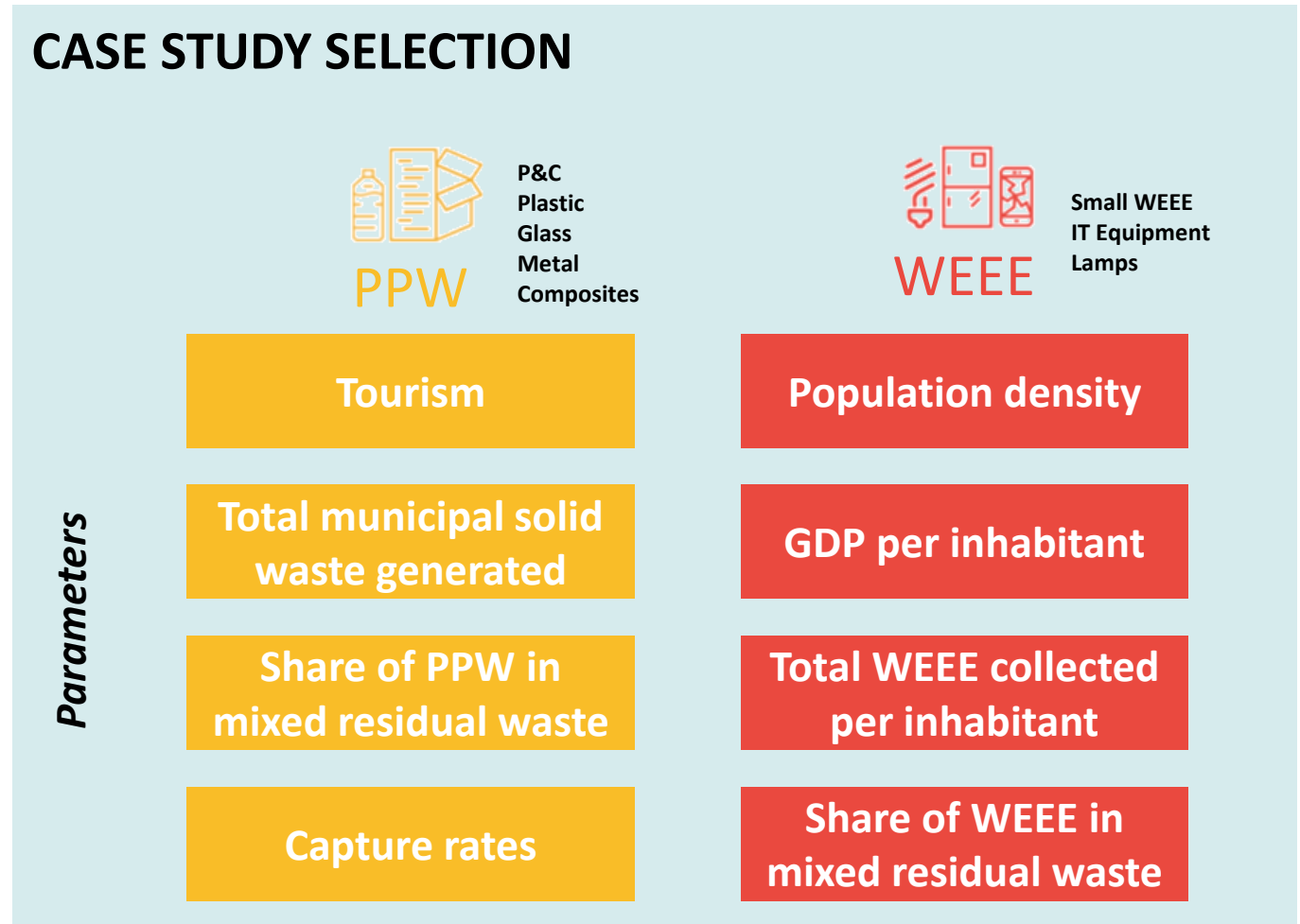
▶ **Policy recommendations** on aligning the different policy levels involved.

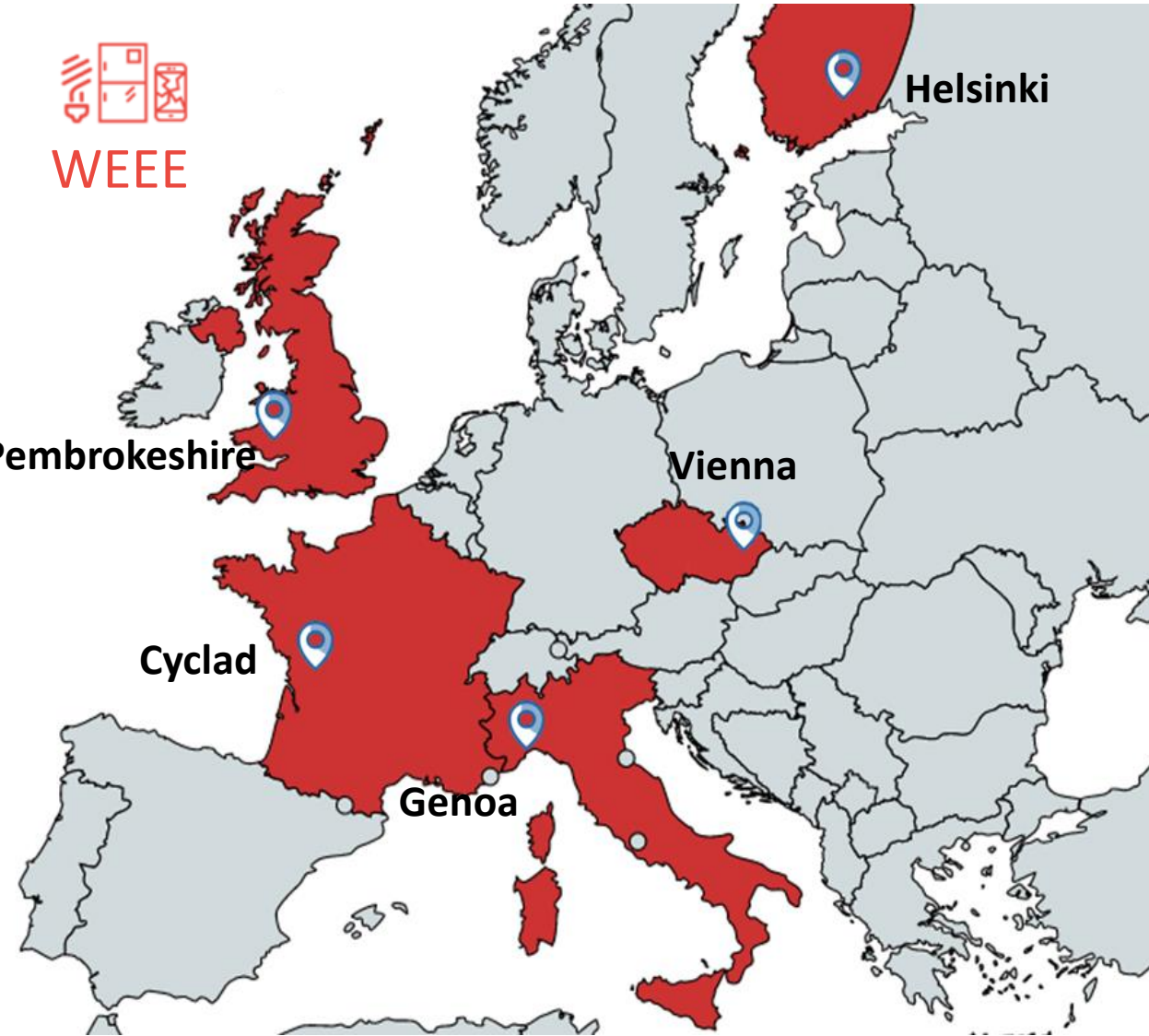
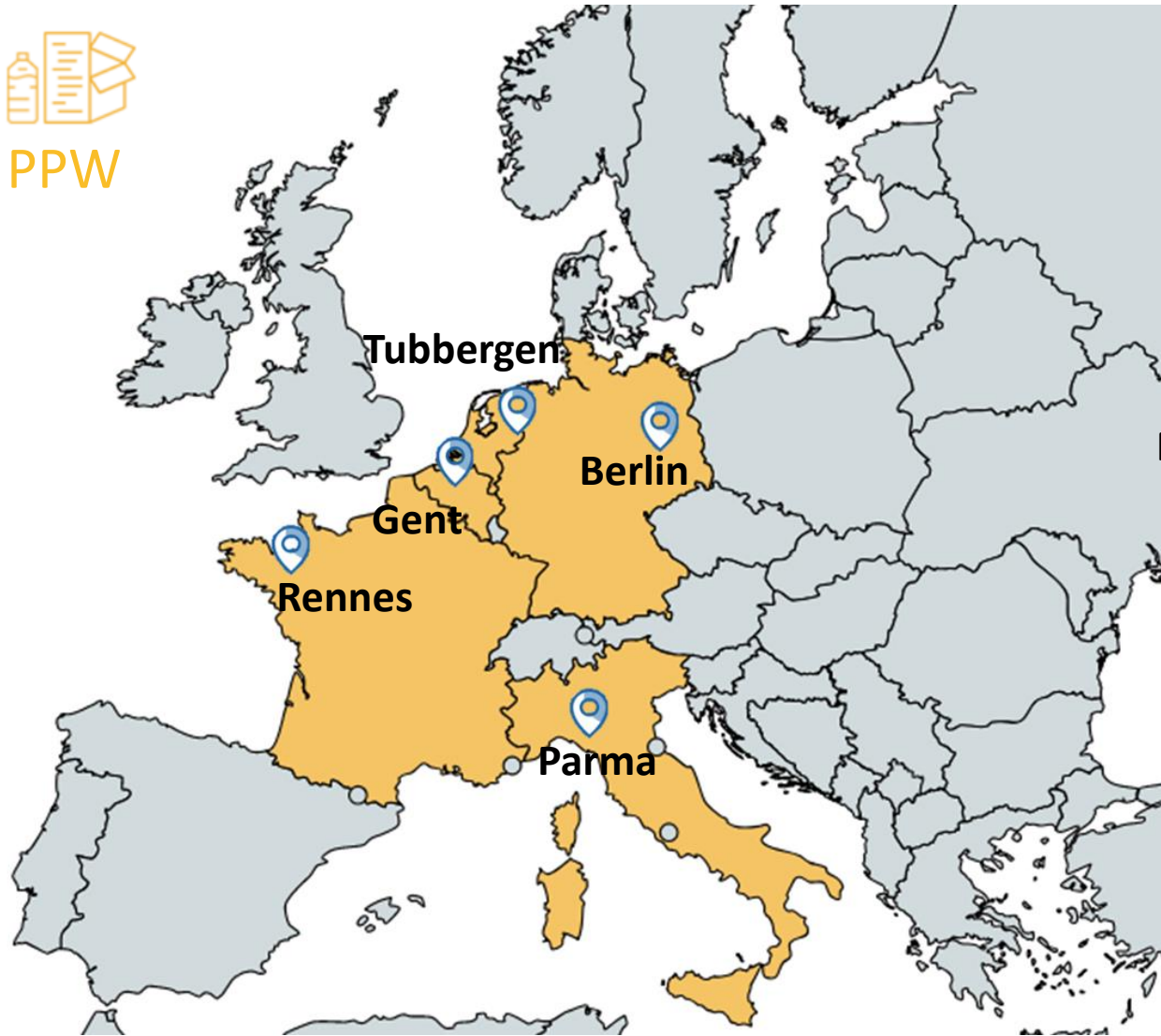
▶ **3 customised factsheets** on waste collection systems



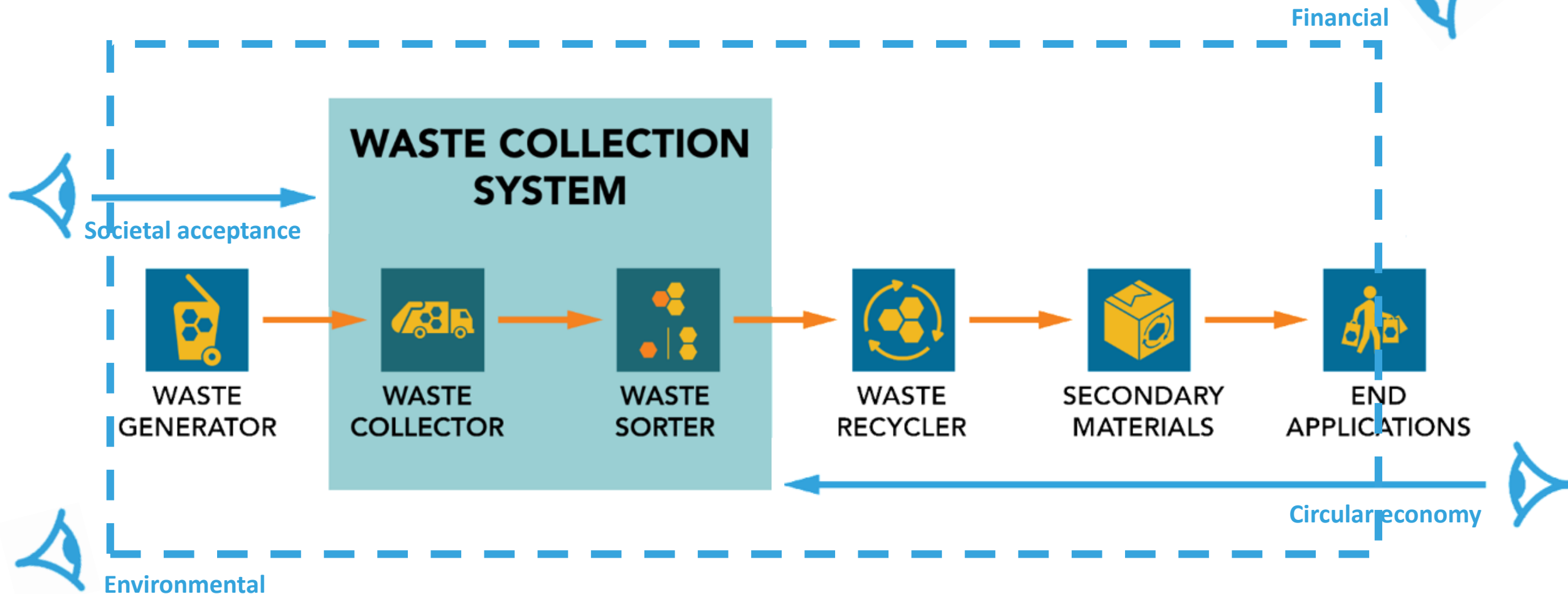
# Assessing the performance of waste collection systems

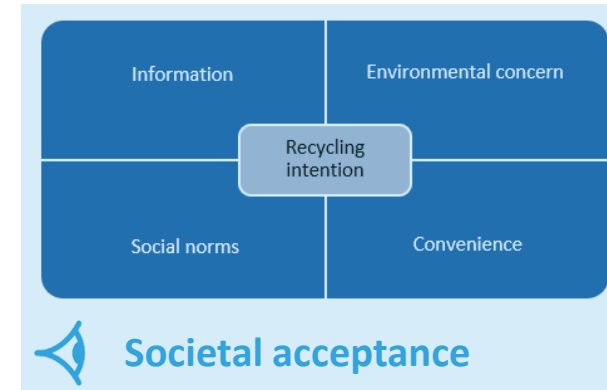
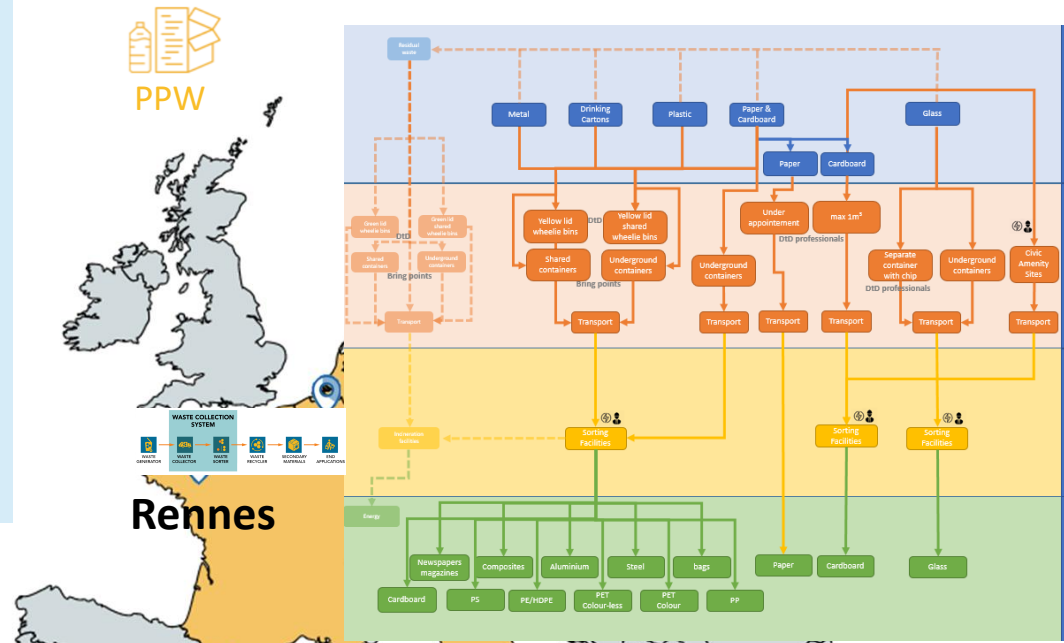
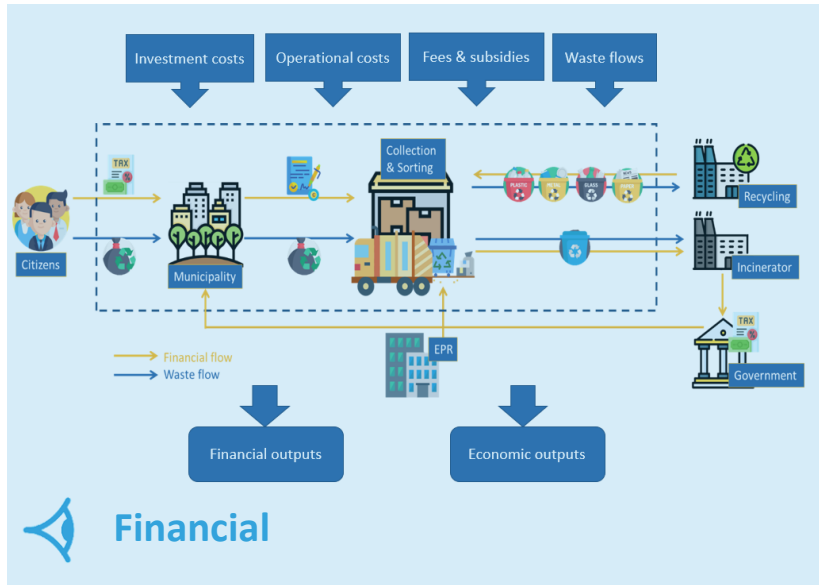
## CASE STUDY SELECTION





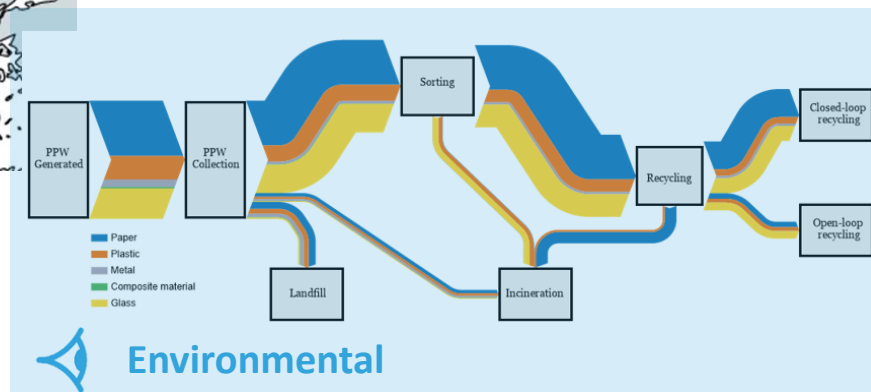
# Assessing the performance of waste collection systems within the waste recycling value chain





Scope	Collection method	Collection output	Sorting output	Recycling output
<b>Glass</b>				
Transparent glass	CAS	Clear container glass	Clear container glass cullet	Container glass (flint, brown, green)
Clear versus mixed colored glass	Bring point	Colored container glass	Brown container glass cullet	Insulation mineral wool (short glass fibre)
Clear versus green versus brown glass	Door-to-door	Mixed container glass	Green container glass cullet	Ceramic sanitary ware
Mixed glass	Bring points + CAS	Mixed container glass co-mingled	Mixed container glass cullet	Fluxing agent in brick manufacture
	Road containers + CAS	with other wastes		Sports turf and related applications
	Door-to-door + bring points			Water filtration media
	Bring points + CAS + other			Abrasive
	Door-to-door + bring points + CAS			Aggregate in construction materials
				Reflective highway paint

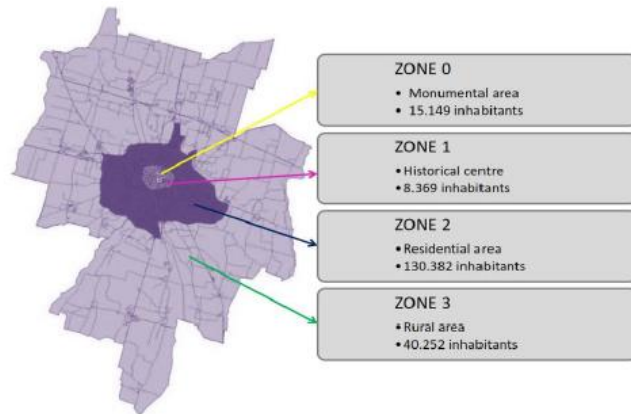
**Circular economy**





# Highlights

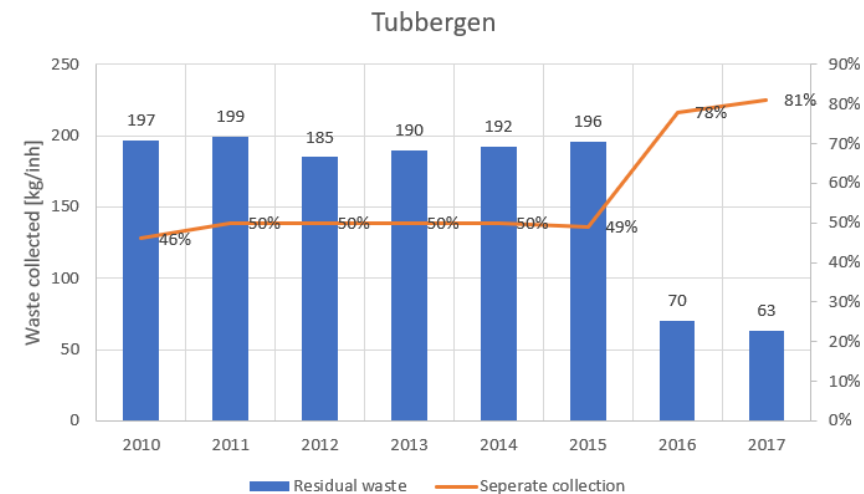
Non transparent glass is excluded from the scope of collection of glass packaging in order to align collection and sorting



For the same waste stream, the collection is tailored to the needs of specific areas within the city

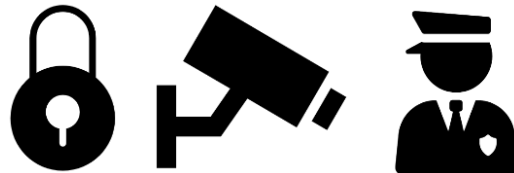


Implementation of a PAYT system led to significant reduction in amount of residual waste generated per inhabitant



# Highlights

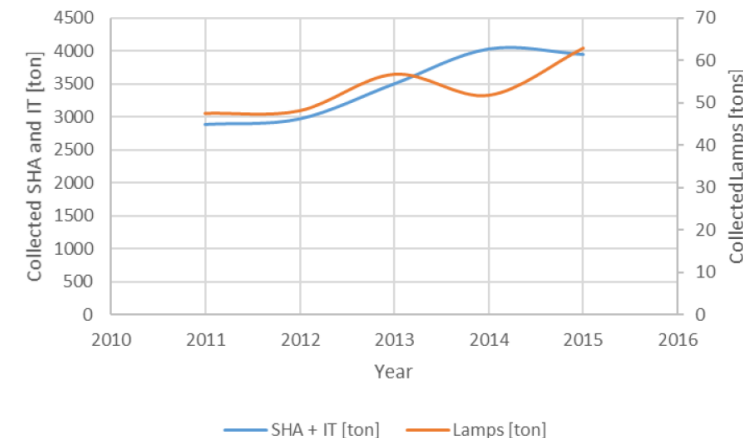
Revised WEEE collection system with the implementation of mobile collection points through the WEENMODELS project



Improved security at Civic Amenity Sites, implementation of legal ban on cash transaction for metals & campaigns against misinformation



Increased density of collection network as well as diversification of collection points





# Lessons learned



Better and more separate collection is financially possible



Environmental impacts related to waste collection system is negligible, benefits arise from materials substitution



**=** 5 cases **≠**

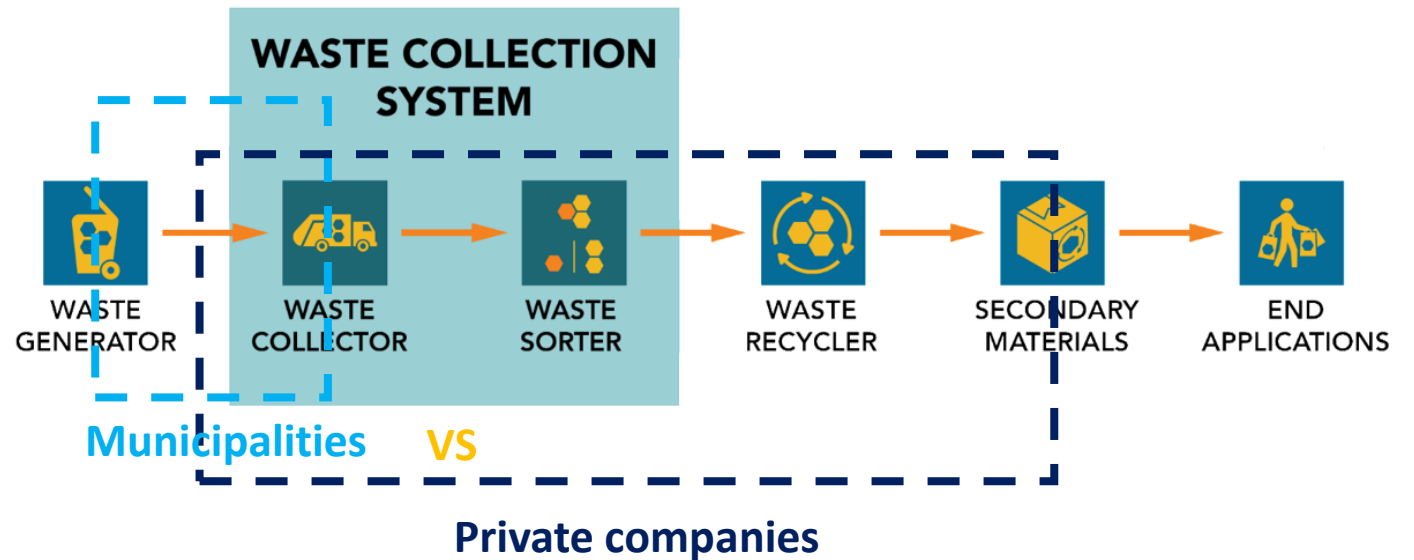


Light packaging collected together

Level of service to citizens



## Organisation of waste collection



# Thank you!

## Contacts

Kévin Le Blévennec  
VITO  
[kevin.leblevennec@vito.be](mailto:kevin.leblevennec@vito.be)

For more info about the project visit the COLLECTORS website at [www.collectors2020.eu](http://www.collectors2020.eu)